



**550**  
ST.CLAIR

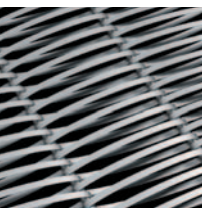
FORM. ART. FUNCTION. LOCATION.



**A thoughtful approach to design.**

Home is personal. It should be as individual as your life, set in a truly urban landscape rising above the Chicago skyline. You want it to be a sanctuary, where you can engage in city life or retreat when you need to unwind. In a neighborhood where the city's culture is within your reach. Where you can entertain guests or maintain your life. Where less can be more. From the inside out, 550 St. Clair has been designed for modern living. A variety of airy, light filled homes are available now.



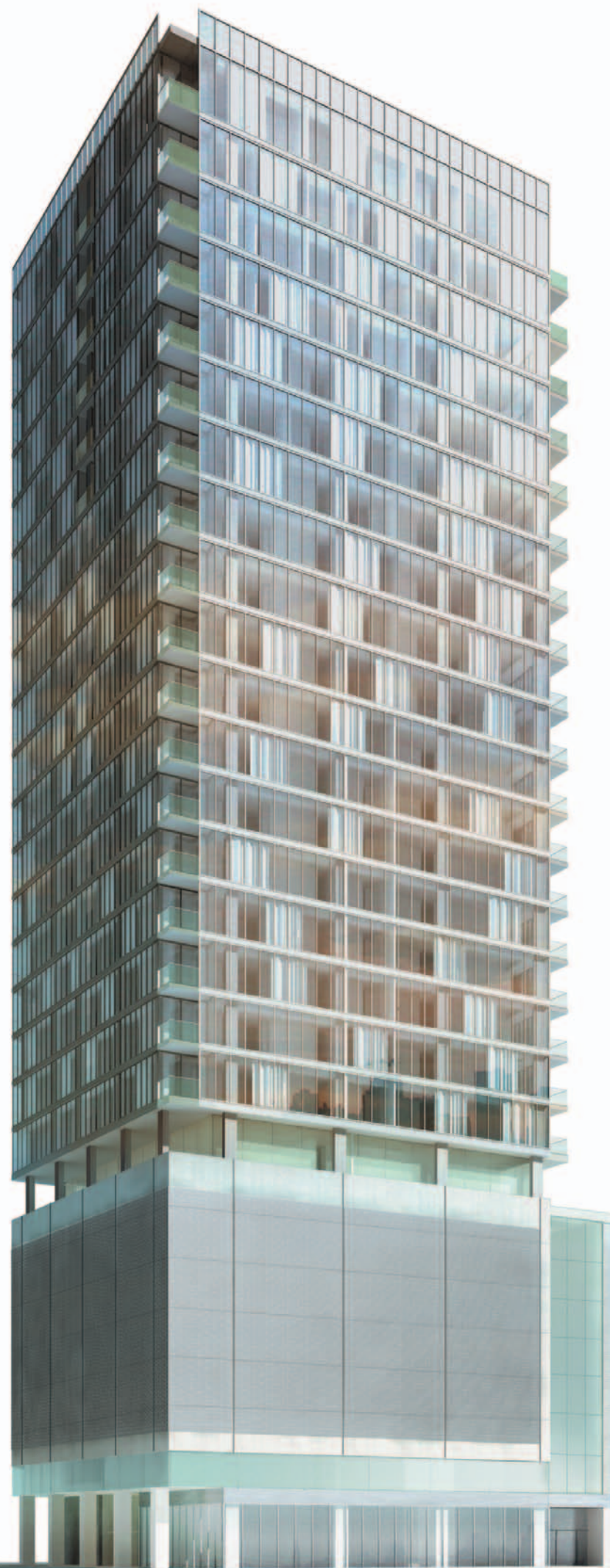


## FORM.

### **Modern living, reinterpreted.**

What makes a building an icon? What is it about architecture that shapes our memory? It's the familiarity of the form, taken to a new level of expression. Walls and windows reinterpreted to make us think and feel a certain way. 550 St. Clair is the only new residential building in the area that introduces a modern aesthetic. Every detail has been considered in its thoughtful design. There is nothing superfluous—just exactly what you need for the way you live. Warm, organic details paired with sleek simplicity. It's a serene and elemental environment that you can make yours.

That's the approach of David Brininstool of Brininstool + Lynch, Architects. Known for bringing modern clarity to structures like the Racine Art Museum, Perimeter Gallery and residences for high profile clients, Brininstool + Lynch has received accolades for its work. Rarely are architects given license to create a building's interiors, yet Brininstool + Lynch has translated its vision into a complete experience.



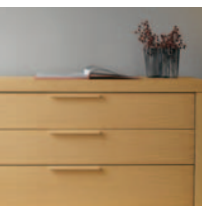


## ART.

### **Surround yourself with art.**

Art is defined as the use of skill and imagination to create something new. In 550 St. Clair, Brininstool + Lynch has made every design decision with care. The result is a functional work of art that is both purposeful and beautiful. You can see it in how the exterior glass of the building shimmers with light. How the lobby radiates an aura of calm. How the units are open and sun-filled, yet private. How the deliberate selection of finishes and appliances perfectly complements the interior. And you'll find a continuation of art in the world outside your windows. Situated at the epicenter of Chicago's culture, you can experience museums, exquisite cuisine, the gallery district, theater row—all by traveling no more than a few minutes on foot or by cab.





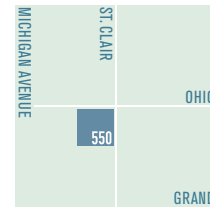
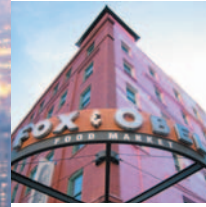
## FUNCTION.

### **Find your sanctuary.**

We can't separate life from architecture. It affects where you eat, sleep, entertain or relax. It becomes your sanctuary and most personal space that reflects who you truly are. 550 St. Clair has been designed from the inside out with the flexibility to adapt to modern life. Flowing floorplans allow you to designate living zones that fit your needs: create a bedroom, office, study or media room as you wish. Built in architectural elements transform these spaces, offering you privacy or openness as needed.

Every detail makes 550 St. Clair a place you will take pleasure in. Floor to ceiling windows. Lofty, high ceilings. Expansive balconies and terraces, where you can watch the sun rise with a morning espresso. From specially designed oversized parking, to the common areas where you can socialize with neighbors, the amenities at 550 St. Clair have been selected to simplify your life and welcome you home.





## LOCATION.

### **The energy of urban life.**

550 St. Clair is your retreat above the best Chicago has to offer: cuisine, culture, shopping, spas and more. Only a half block from the Mag Mile and three blocks to the lakefront. Spend less time commuting and more time savoring your new neighborhood. An architecturally diverse and historic part of Chicago, Streeterville is experiencing another renaissance as a new generation of fashionable businesses and residences moves in.

Be where you desire. The Museum of Contemporary Art. Chicago Shakespeare Theater. Lookingglass Theatre Company. The Arts Club. Fox & Obel. The Apple Store. Nordstrom. Holmes Place fitness center and spa. River East movie theaters. Tru. Les Nomades. This is your opportunity to live in an architecturally wonderful building in the best part of the city.

## AMENITIES

### Interior Features

- Most units include private balconies or oversized terraces
- Floor to ceiling windows
- Energy efficient, Low-E thermal pane insulating glass
- Approximately 10' (floors 9–16) and 11' (floors 17–26) exposed concrete ceilings
- Choice of Brazilian Cherry or Maple hardwood flooring throughout, including bedrooms
- Integrated ambient lighting in living rooms, bedrooms and kitchen
- 8' high solid core doors and trim, including pocket doors with architectural hardware
- All hardware in brushed chrome finish
- Large walk-in closets (per plan)
- Individual climate control in each residence
- Year round heating and cooling capabilities
- Category 5 cable for telephone lines pre-wired in living rooms and bedrooms
- Pre-wired for satellite TV and ultra high-speed Internet over dual T-1 lines

### Kitchen

Appliance package in stainless steel and custom matching panels:

- Sub-Zero refrigerator with built-in icemaker
- Bosch multi-cycle dishwasher
- Bosch or Gaggenau cooktop
- Bosch built-in oven
- Bosch microwave/exhaust hood
- European designer cabinets
- 3/4" granite countertops and backsplash with eased edge
- Atmospheric lighting above and under cabinets
- Stainless steel undermount sink
- GROHE single-lever chrome faucet with pullout sprayer
- Continuous feed under-sink garbage disposal

### Bathrooms

- Marble flooring, tub surround and shower walls in master bath
- White mosaic ceramic tile on floor and walls in secondary baths
- Separate glass door enclosed showers
- GROHE shower and tub faucets with pressure balancing valves
- GROHE chrome single handle lavatory faucet
- European designer vanity with full-width mirror above
- Durable solid surface integral bowl vanity tops

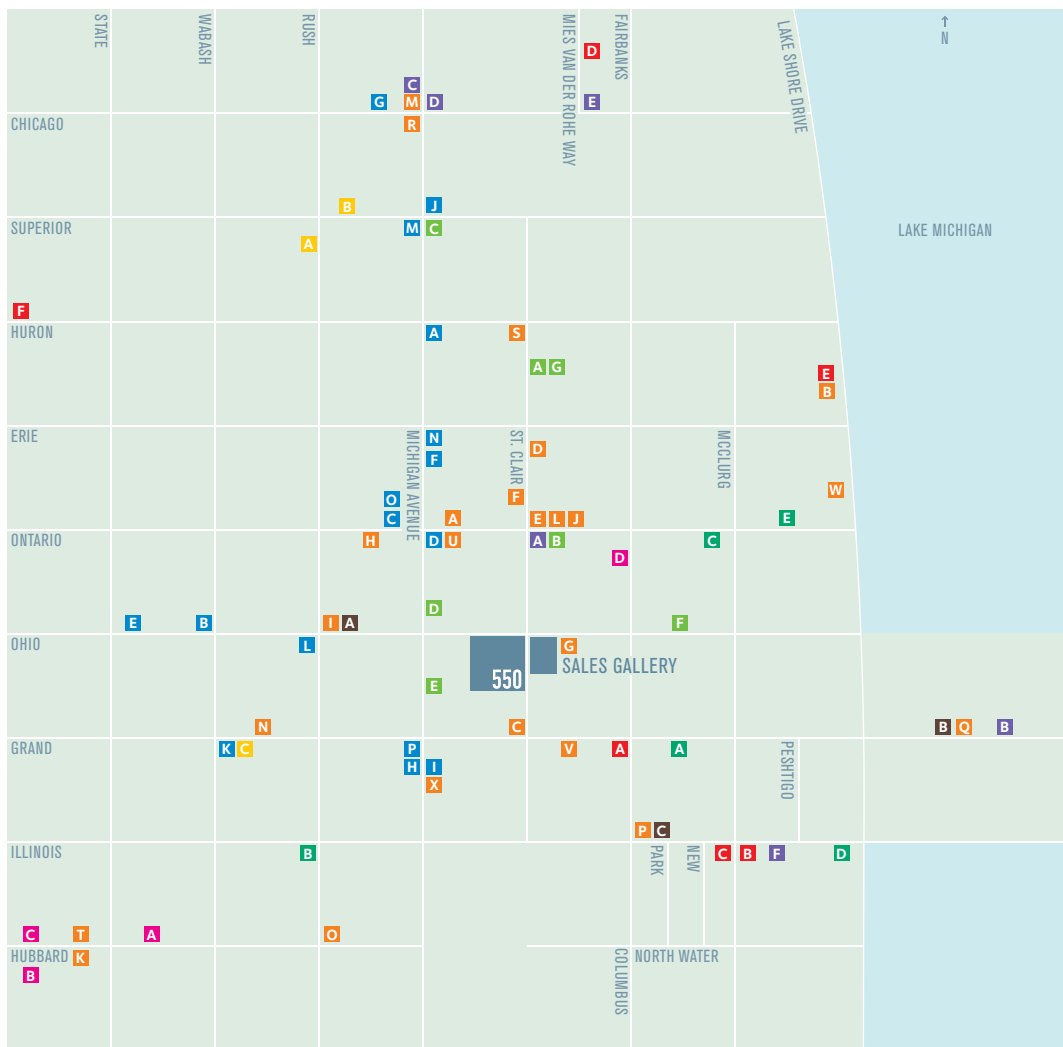
### Laundry

- Bosch full-sized front loading washer/dryer in residence

### Building Amenities

- Luminous glass arcade framing a serene, welcoming lobby
- 24 hour door staff
- Two high-speed elevators
- Heated, ventilated indoor parking with fire protection sprinklers
- Access controlled garage entry system
- Urban garden terrace facing north, south and west overlooking Michigan Avenue
- Lap pool
- Men's and women's saunas
- Fully equipped fitness center
- Storage lockers for every residence
- Bike storage
- Fully sprinklered, central fire protection system





## SHOPPING

- A** Apple
- B** Bloomingdale's Home
- C** Cartier
- D** Coach
- E** Design Within Reach
- F** Ermenegildo Zegna
- G** Giorgio Armani
- H** Kenneth Cole
- I** La Perla
- J** Neiman Marcus
- K** Nordstrom @ North Bridge
- L** Room & Board
- M** Saks Fifth Avenue
- N** Salvatore Ferragamo
- O** Van Cleef & Arpels
- P** Virgin Megastore

## NIGHTLIFE

- A** 22 Restaurant and Bar Moderne
  - B** Moda
  - C** Rockit
  - D** Timothy O'Toole's
- Within one mile:
- Base
  - Le Bar
  - Minx
  - Narcisse
  - Sound-Bar
  - Sugar

## CULTURE

- A** The Arts Club
  - B** Chicago Shakespeare Theater
  - C** City Gallery in the Water Tower
  - D** Lookingglass Theatre Company
  - E** Museum of Contemporary Art
  - F** River East Art Center
- Within one mile:
- The Art Institute of Chicago
  - Chicago Architecture Foundation
  - Chicago Cultural Center
  - Chicago Theater
  - Harris Theater for Music and Dance
  - The House of Blues
  - Joe Segal's Jazz Showcase
  - Millennium Park
  - Oriental Theater
  - River North Gallery District
  - Symphony Center

## GROCERIES

- A** Dominick's
- B** Fox & Obel
- C** Market Place
- D** MCA Farmer's Market (seasonal)
- E** Treasure Island
- F** Whole Foods

## CUISINE

- A** Bice Ristorante
- B** Bistro Pacific
- C** Boston Blackie's
- D** Caliterra
- E** Capital Grille
- F** Coco Pazzo Café
- G** Emilio's Sol y Nieve
- H** Grand Lux Café
- I** Heaven on Seven
- J** Kamehachi of Tokyo
- K** Kevin
- L** Les Nomades
- M** NoMI
- N** OYSY River North
- O** Phil Stefani's 437 Rush
- P** PJ Clarke's
- Q** Riva
- R** RL
- S** Tru
- T** Vermillion
- U** Viand Bar & Kitchen
- V** Volare
- W** Wave
- X** Zest

## FITNESS

- A** Holmes Place
- B** Lakeshore Athletic Club Downtown
- C** Lakeshore Athletic Club Streeterville
- D** North Pier Athletic Club
- E** Onterrie Fitness Center

## SPAS

- A** Maxine
  - B** The Peninsula Spa
  - C** Spa Nordstrom
- Within one mile:
- American Male
  - Honey Child
  - Tiffani Kim Institute
  - Urban Oasis
  - urbanshe

## FILM

- A** 600 North Michigan
  - B** Navy Pier IMAX
  - C** River East 21
- Within one mile:
- Esquire
  - Gene Siskel Film Center

## SERVICES

- A** Northwestern Memorial Hospital
- B** Ontario Station Post Office
- C** Banco Popular
- D** Bank One
- E** Citibank
- F** North Bank
- G** Northern Trust